

MOUNTAIN TRIALS RALLY

Merritt, BC

June 18, 2005

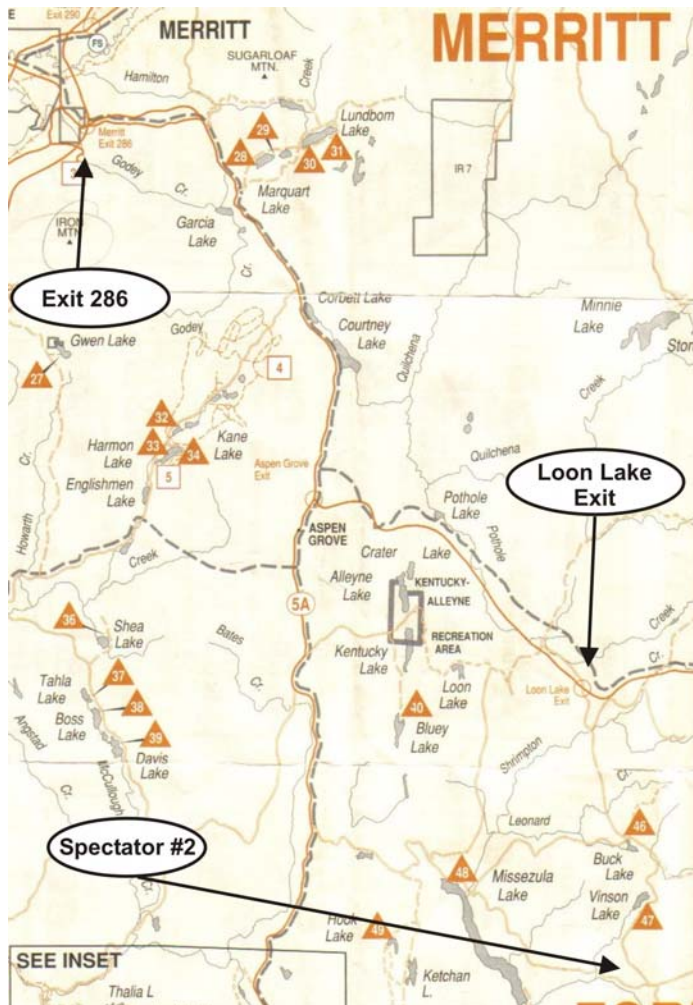
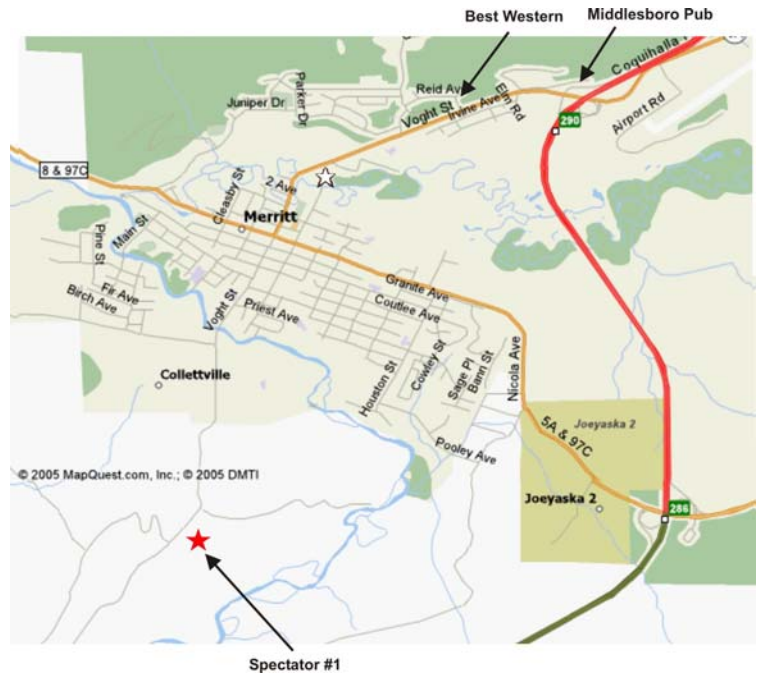


SPECTATOR INFORMATION

Directions to Spectator Point #1:

From Merritt, proceed south along Voght Street.

- After crossing a small bridge, keep to the right (don't drive into the Tolko yard)
- And then take the next left onto Midday Valley Road.
- 0.8km from the start of Midday Valley Road, continue straight ahead where it turns to gravel.
- 1 km beyond that, follow signs into the spectator parking area on the left.
- Follow the marshals' instructions on where to park.
- Race cars will be on display from 10:30 am to 11:30am. The race starts at noon.
- The race cars will pass this point two times, running continuously from 12:00 noon to 1:00pm.
- Return to Merritt by the way you came.



Directions to Spectator Point #2:

From Merritt, proceed towards Kelowna via:

- Exit 286, head towards Kelowna on Hwy 97C East
- Continue along 97C, past the Aspen Grove turn-off
- Turn off at Loon Lake Exit.
- At the exit, turn right over the cattleguard and through the gate onto Shrimpton Creek Forest Service Road.
- Stay on the main-line logging road, following the rally spectator signs past Vinson Lake Camp Site.
- Park your car on the right side of the road in designated area.
- The total travel distance is approx 60 km.
- The designated spectator site is close to the service pits and the spectator location.
- Race cars will be passing this location 5 times between 2:00pm until 7:00pm.

DO NOT BLOCK TRAFFIC
WATCH FOR TRAFFIC
DO NOT SPEED
SMOKING BAN IN ALL AREAS